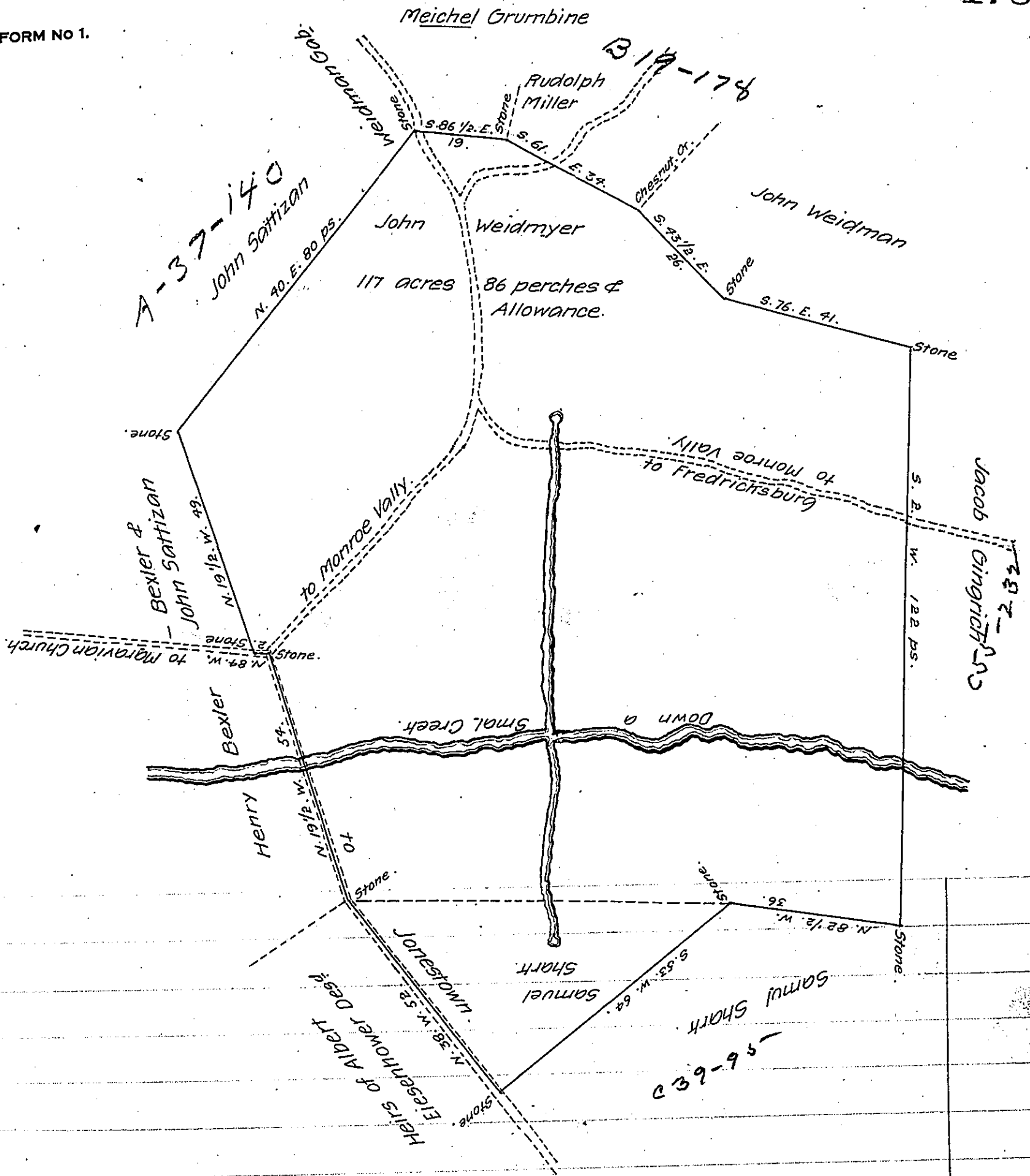


FORM NO 1.



By virtue of an application Granted to Peter Wolf No 2152 dated november 29th 1766.
 Surveyed the ninth day of June A.D. 1874 by the Old Boundary Liens to John Weid-
 myer to Samuel Shart Situate in Bethel Township Lebanon County Containing 117
 acres & 86 perches and the Allowance of Six per Ct. for Roads &c. Surveyed by
 Martin Meily Dpt. Surveyer

To Robert B. Beath
 Surveyer General of Pa.]

for Lebanon County

IN TESTIMONY that the above is a copy of the original remaining on file in
 the Department of Internal Affairs of Pennsylvania, made
 conformably to an Act of Assembly approved the 16th day of
 February, 1833, I have hereunto set my Hand and caused
 the Seal of said Department to be affixed at Harrisburg,
 this ninth day of July 1907.

Henry Houch
 Secretary of Internal Affairs.